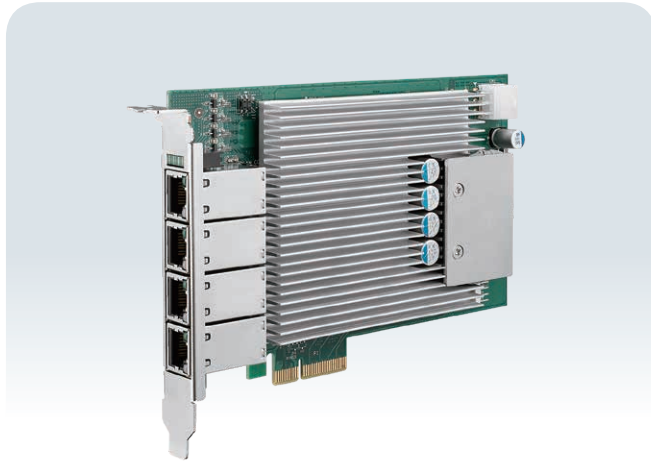


# PE-6004H

Intel® I226-IT 4 ports GigE IEEE 802.3bt High Power PoE++ PCI Express Expansion Card, -25°C to 65°C



## Features

- IEEE 802.3bt PoE++ PSE compliant, up to 90W per port
- Total PoE power budget up to 200W across 4 ports
- 4x 2.5GBASE-T ports with Intel® I226-IT controller
- Supports 2.5G / 1G / 100M / 10M link speeds
- x4, Gen2 PCI Express interface
- Standard RJ-45 connectors
- -25°C to 65°C operating temperature
- Per-port PoE<sup>+</sup> power on/ off control by software API, supports IEEE 1588



## Specifications

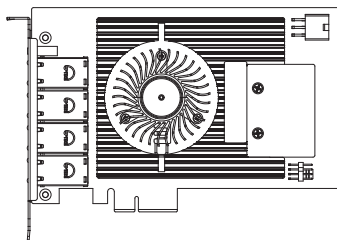
| Ethernet           |   |
|--------------------|---|
| Bus Interface      | x4, Gen2 PCI Express  |
| LAN Controller     | Intel® Ethernet Controller I226-IT  |
| LAN Controller Qty | 4   |
| Data Rate          | 2.5 Gbps/1 Gbps/100Mbps /10 Mbps  |
| Number of Port     | 4   |
| Ethernet Connector | RJ-45 connectors  |
| PoE Standard       | <ul style="list-style-type: none"> <li>▪ In compliant with IEEE 802.3bt PoE++ Type 3 and Type 4 PSE, maximal 90W output on a single PoE++ port</li> <li>▪ Compatible with 802.3at (PoE<sup>+</sup>) and 802.3af (PoE) PD</li> </ul> |
| Power Requirement  |   |
| Input              | Maximum 12V from on-board 6-pin ATX Power Connector   |

| Software Support      |   |
|-----------------------|---|
| OS                    | Windows 10/11, Linux  |
| Mechanical            |   |
| Dimensions            | 167mm x 111mm (6.6" x 4.37")  |
| Bracket               | Full height   |
| Environment           |   |
| Operating Temperature | <b>PE-6004H</b> : -25°C to 55°C (-13°F to 131°F)<br><b>PE-6004HF</b> : -25°C to 65°C (-13°F to 149°F) |
| Storage Temperature   | -40°C to 85°C (-40°F to 185°F)  |
| Humidity              | 5% to 95% Humidity, non-condensing  |
| Relative Humidity     | 95% @65°C   |
| EMC                   | CE, FCC   |

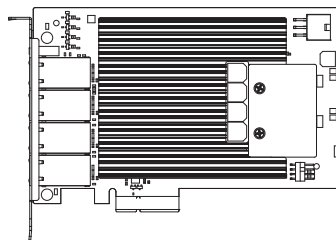
## Dimensions

Unit : mm/ inch

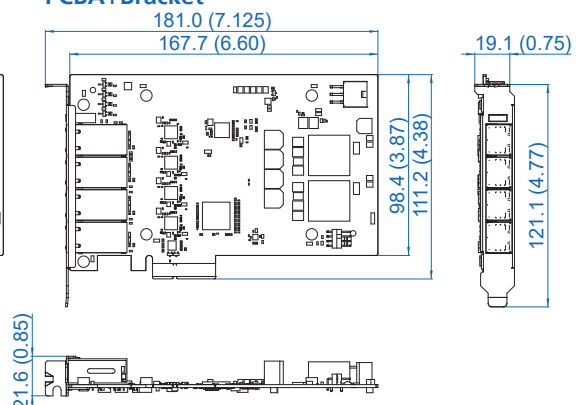
FAN Sink



Heat Sink



PCBA+Bracket



## Order Information

|                  |   |
|------------------|---|
| <b>PE-6004H</b>  | 4-Port 2.5GbE 802.3bt PoE++ PCIe Card with Intel® I226IT, up to 140W Total PoE, Heatsink, -25°C to 55°C |
| <b>PE-6004HF</b> | 4-Port 2.5GbE 802.3bt PoE++ PCIe Card with Intel® I226IT, up to 200W Total PoE, Fansink, -25°C to 65°C  |

## Recommended Accessories

|                       |   |
|-----------------------|---|
| <b>61-1400003-0G5</b> | ATX 8-pin to 6-pin cable for RCX Series |
| <b>61-1300020-100</b> | ATX 6-pin to 6-pin cable for ECX Series |